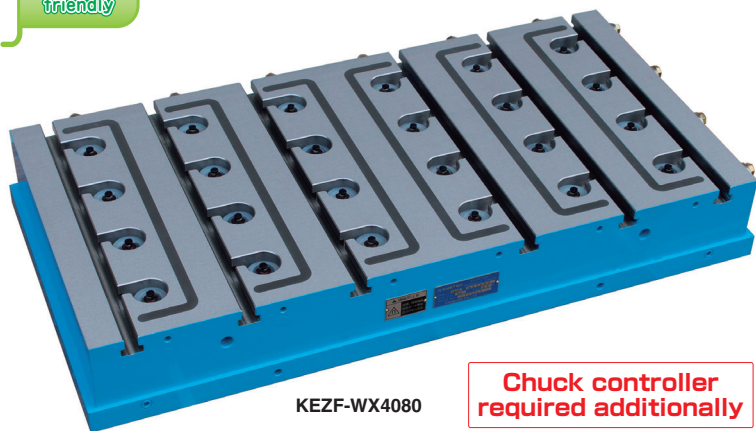


Model **KEZF-WX** ELECTROMAGNETIC ACSHIM* WITH T-SLOTS

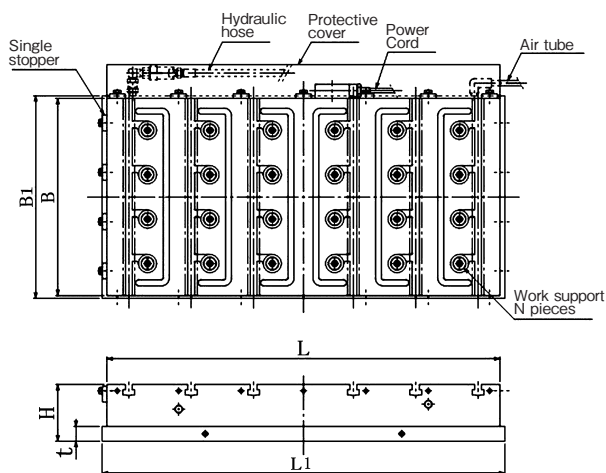
Environmentally friendly

Patented Design registered



KEZF-WX4080

Chuck controller required additionally



[Application]

Most suitable for precise setting of workpieces including mold bases in the milling sector.

[Features]

- The sticks on the chuck attractive face hold workpieces in the natural state.
- Compared with Model KEZF-WS, this model offers more freedom of increasing/decreasing the number of sticks.
- The elimination of the lid of the stick section has enhanced maintainability as there is no need to align the level of the body and the lid when replacing the stick unit.
- The utilization of newly installed T slots enables it to clamp nonferrous or irregular shaped workpieces.
- Workpieces of 3 mm distortion max. can be supported.
- Can be used in wet operations.



<An example of securing an aluminum plate by use of T slots.>



A new construction to prevent occurrence of stick motion failure due to chips employed.

Model	Nominal Size	Work Face		Mounting Face			Height H	Number of Sticks	Voltage	Current	Mass	Dedicated Control Unit
		B	L	B ₁	L ₁	t						
KEZF-WX 3060	300 (11.8) × 600 (23.6)	300 (11.8)	600 (23.6)	310 (12.2)	620 (24.4)	30 (1.18)	115 (4.52)	15	90 VDC	2.0A	140kg/ 308 lb	EH-VFW205A
KEZF-WX 4080	400 (15.7) × 800 (31.4)	400 (15.7)	800 (31.4)	410 (16.1)	820 (32.2)			24		2.3A	250kg/ 551 lb	
KEZF-WX50100	500 (19.6) × 1000 (39.3)	500 (19.6)	1000 (39.3)	510 (20.0)	1020 (40.1)			40		4.0A	390kg/ 859 lb	
KEZF-WX60100	600 (23.6) × 1000 (39.3)	600 (23.6)	1000 (39.3)	610 (24.0)	1020 (40.1)			48		6.0A	470kg/ 1036 lb	

*The control unit and clamp parts are not included. The KANETEC chucks work best when a KANETEC control unit is used.

Model **EH-VFW** CONTROL UNIT FOR ACSHIM* FOR HIGH-PRECISION CUTTING/GRINDING AND ELECTROMAGNETIC ACSHIM* WITH T-SLOTS

Controls ACSHIM Series precisely by simple operation!



EH-VFW205A



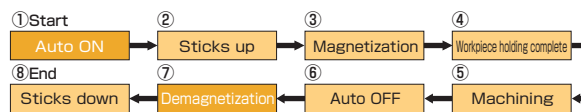
<Operation box>

[Application]

This is a dedicated unit equipped with functions to control the magnetic force of the ACSHIM and movement of sticks.

[Features]

- A series of operation can be performed automatically with the auto button on the operation box.



Model	Power Source	Rated Output		Required Air Pressure	Dimensions			Mass	Control Box		
		Voltage	Current		Width	Height	Depth		Width	Height	Depth
EH-VFW205A	Single-phase 200VAC 50/60Hz	0-90 VDC	5A	0.3-0.5MPa	600 (23.6)	500 (19.6)	250 (9.84)	40kg/ 88 lb	180 (7.08)	180 (7.08)	70 (2.75)
EH-VFW210A			10A		700 (27.5)	600 (23.6)	300 (11.8)				

ELECTROMAGNETIC CHUCKS
CHUCK CONTROLLERS
PERMANENT ELECTROMAGNETIC CHUCKS
PERMANENT ELECTROMAGNETIC CHUCKS
BLOCKS FOR MC
VACUUM CHUCKS
PROMELTA* SYSTEM
SINE BAR CHUCKS
BLOCKS HOLDERS, MINI CHUCKS
HOLDING TOOLS
MEASURING TOOL HOLDERS
MAGNETIC HOLDERS
MAGNETIC TOOLS