

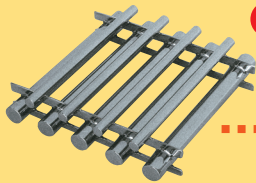
POWERFUL MAGNETIC SEPARATORS

An example of flow of removing magnetized foreign matter

See the examples of fabrication on pages 149 and 150 also.

Rectangular grid type magnetic bar unit

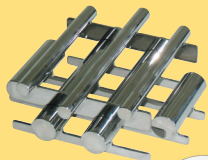
Model **PCMG**
P155



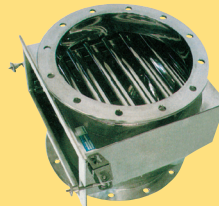
Beverages Juice, coffee, dairy products, tea
Seasoning powder Red pepper, powder wasabi, flavored rice sprinkles
Seasoning liquid Miso, soy source, soup
Candy raw materials/Medicine/Chemicals/Glass

Round grid type magnetic bar unit

Model **PCMG-C**
P156



Magnetic pipe
Model **PCMP**
P159



Seasoning powder Red pepper, powder wasabi, flavored rice sprinkles
Medicine/Cosmetics/Plastic pellets

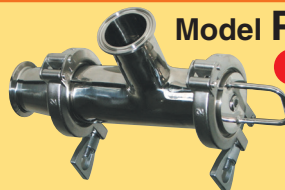
Magnetic filter
P157-158 Model **PCMH2**



Beverages Juice, coffee, dairy products, tea
Seasoning liquid Miso, soy source, soup

L-type magnetic filter

Model **PCML**
P160

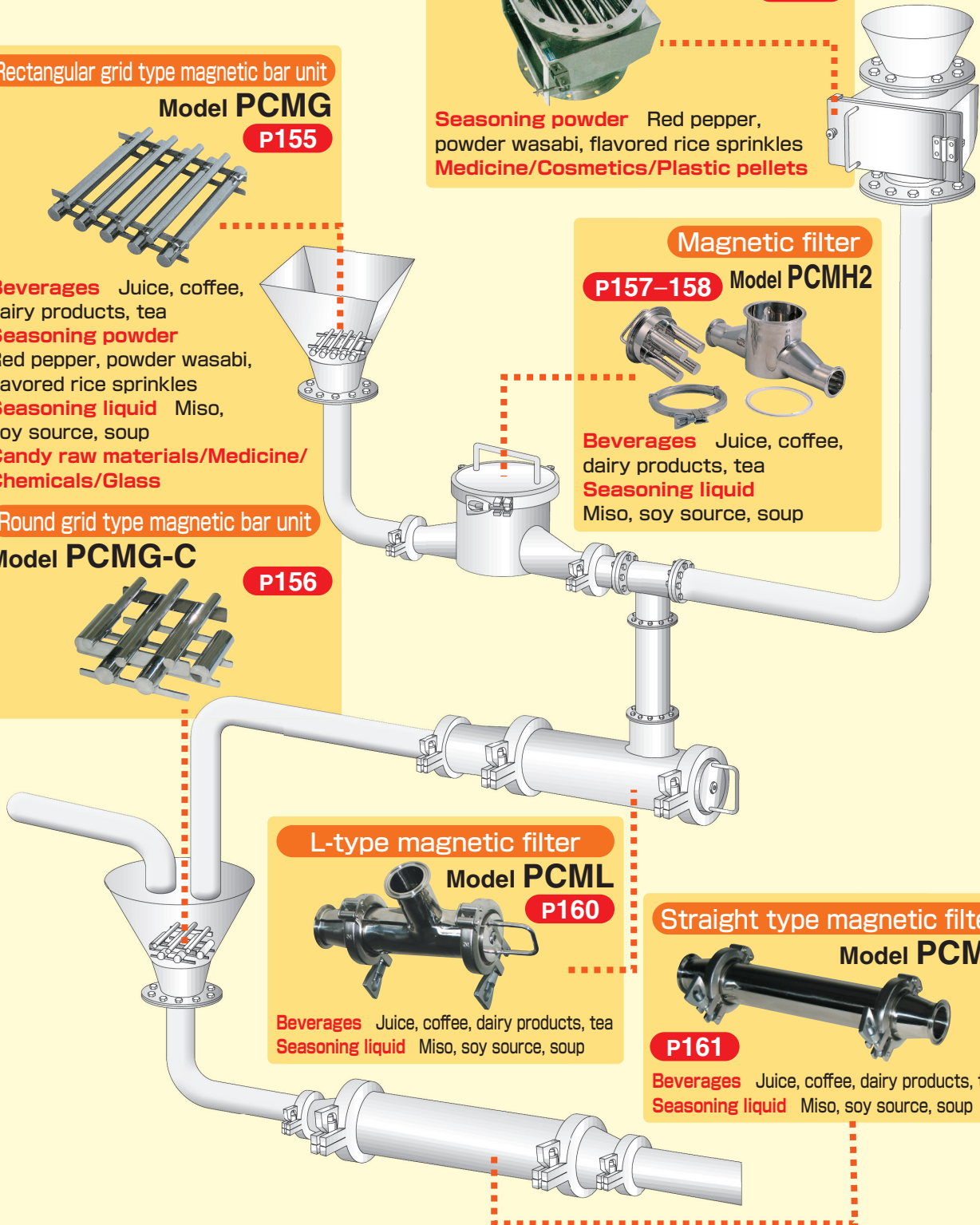


Beverages Juice, coffee, dairy products, tea
Seasoning liquid Miso, soy source, soup

Straight type magnetic filter
Model **PCMS**

P161

Beverages Juice, coffee, dairy products, tea
Seasoning liquid Miso, soy source, soup



MAGNETIC TOOLS & EQUIPMENT
FOR FEEDING OPERATION

LIFTING
MAGNET

MAGBORE*

CHIP & SLUDGE
CONVEYANCE EQUIPMENT

ENVIRONMENTAL
EQUIPMENT

MAGNETIZER AND
DEMAGNETIZER

MAGNETIC EQUIPMENT
FOR CONVEYANCE

MAGNETIC
SEPARATORS

POWERFUL MAGNETIC
SEPARATORS

MEASURING
TOOLS

MEASURING
INSTRUMENTS

MAGNETIC
MATERIALS